

2025 World University Cup Selection

2025 World University Cup Team Selection Policy.

Overview

University international competitions alternate each year between two major events: the IPF University Powerlifting Cup and the FISU World University Championships. IPF Cup years fall on odd-numbered years (like 2025), while FISU Championships take place in even-numbered years. The key difference between the two is that athletes must hold a UK passport to be eligible for FISU Championships, whereas no such passport requirement exists for the IPF Cup.

In addition, the European University Cup is held annually, and a smaller development-focused team will be selected for this championship. Priority will be given to lifters who are eligible and likely to be strong candidates for the next FISU Championships, supporting long-term progression and experience at the international level.

Team Objectives

To select a competitive University National Team for the IPF University Powerlifting Cup, prioritising performance at BUCS, eligibility under university and international rules, and long-term athlete development.

Eligibility Criteria

Athletes must:

- Be enrolled in a UK university (current student status) or recently graduated (via valid dispensation).
- Have placed 1st or 2nd at BUCS, or achieved a dispensation total that would have placed them top 2.
- Be born between 01/01/2000 and 31/12/2007.
- Not already be selected for the Junior or Open national teams.
- Achieve a total at BUCS (or via dispensation) that meets or exceeds the 2024 Open Qualifying Total (QT) in the desired weight class.

2025 World University Cup Selection

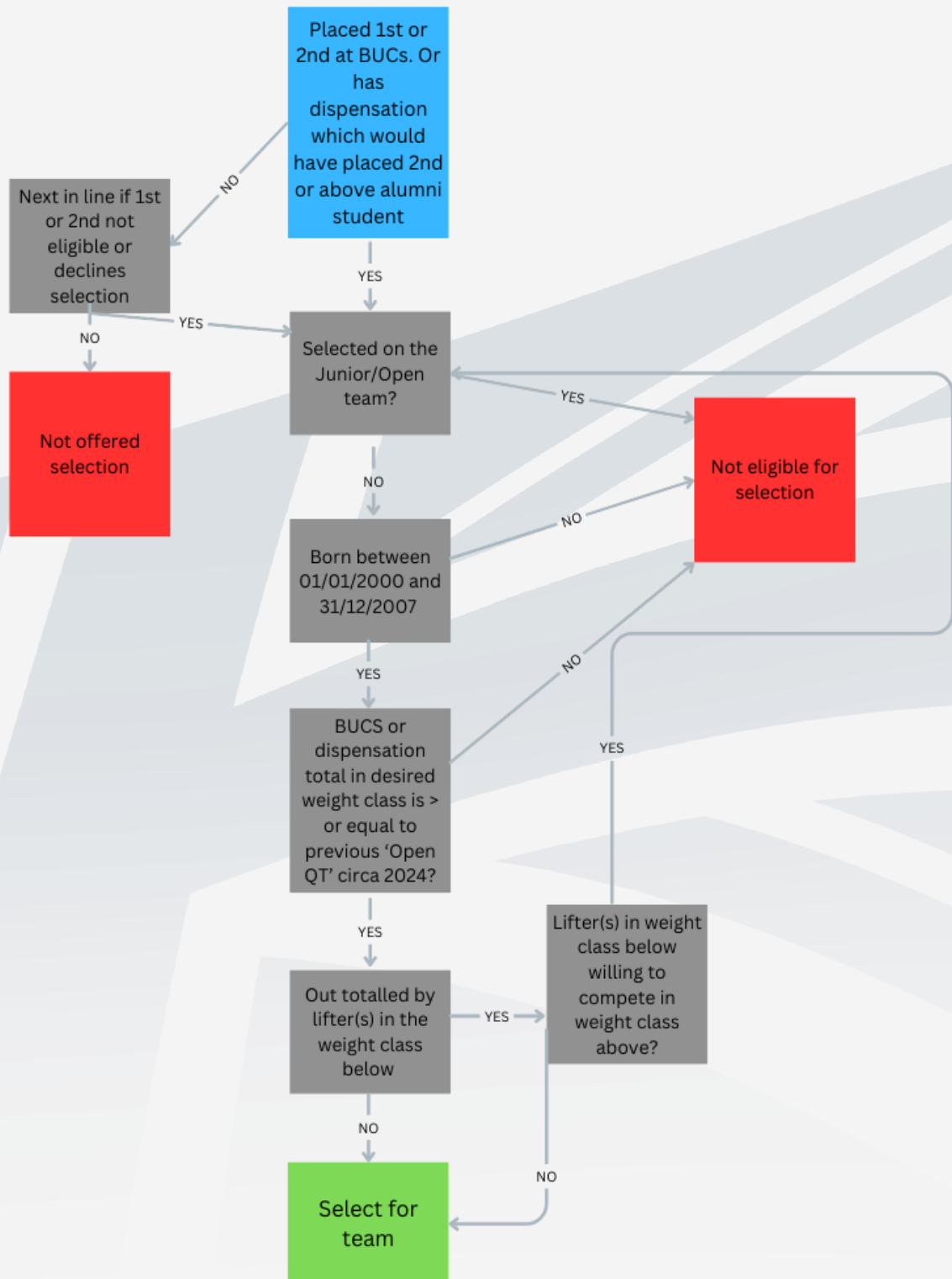
Selection Process

Selections will follow this step-by-step decision flow (see below for flow chart):

- 1. Top Performers Considered First:**
Athletes placing 1st or 2nd at BUCS or those eligible via dispensation are the starting point for selection.
- 2. National Team Conflict Check:**
If already selected for the Junior or Open GB Team, the athlete becomes ineligible for University Team selection.
- 3. Age Eligibility Window:**
Only athletes born between 01/01/2000 and 31/12/2007 qualify.
- 4. Minimum Performance Requirement:**
Athletes must hit or exceed the Open QT from 2024 in their intended weight class.
- 5. Resolving Weight Class Conflicts:**
If an athlete is out-totalled by someone in a lower weight class, the selection may shift if the higher-totalling lifter is willing to compete in the higher class.
- 6. Final Team Spot:**
The athlete with the highest valid total in each weight class will be selected, pending the above steps.
- 7. Reserves and Alternates:**
If a top 2 BUCS athlete declines or is ineligible, the next-in-line athlete will be considered (typically 3rd place).

2025 World University Cup Selection

Flowchart



2025 World University Cup Selection

Additional Notes

- Final decisions lie with the University Team Head Coach and supporting selection committee.
- Athletes must remain compliant with British Powerlifting and IPF regulations.
- Selection policy may be adjusted in future years to reflect international federation changes or structural updates to BUCS.
- The IPF has announced that the 2025 University Powerlifting Cup will be limited to participation from only 10 universities. This restriction may impact team size and final athlete selection, and selections will be made with this constraint in mind.